

Site Information:

Project: Wind Hybrid Project
 Location: Morris, MN
 Elevation: 350 m

Sensor Information:

1 NRG #40 Anem. m/s
 2 NRG #40 Anem. m/s
 3 NRG #40 Anem. m/s
 4 NRG #40 Anem. m/s
 5 NRG #40 Anem. m/s
 6 NRG #40 Anem. m/s
 7 #200P Wind Vane
 8 #200P Wind Vane
 9 NRG #110S Temp C
 10 BP-20 Barom. mb
 11 No SCM Installed
 12 No SCM Installed

May 2004**Summary Report**

SITE 1080
 WCROC

Channel	1	2	3	4	5	6	7	8	9	10		
Height	50 m	50 m	40 m	40 m	30 m	30 m	50 m	40 m	2 m	2 m	-----	-----
Units	m/s	m/s	m/s	m/s	m/s	m/s	deg	deg	C	mb	-----	-----
Intervals with Valid Data	4464	4464	4464	4464	4464	4464	4464	4464	4464	4464		
Average Filtered Data	7.27	7.33	6.85	7.08	6.56	6.63	51.41	54.07	13.28	975.13		
Average for All Data	7.27	7.33	6.85	7.08	6.56	6.63	51.41	54.07	13.28	975.13		
Min Interval Average	0.4	0.4	0.4	0.4	0.4	0.4			-0.5	953.5		
Date of Min Interval	5/1/2004	5/1/2004	5/1/2004	5/1/2004	5/1/2004	5/1/2004			5/1/2004	5/31/2004		
Time of Min Interval	12:30:00 AM	12:30:00 AM	12:00:00 AM	12:00:00 AM	12:00:00 AM	12:00:00 AM			3:40:00 AM	8:50:00 AM		
Max Interval Average	18.9	18.9	18.5	18.5	17.9	17.8			33	988.7		
Date of Max Interval	5/11/2004	5/11/2004	5/11/2004	5/11/2004	5/11/2004	5/11/2004			5/5/2004	5/7/2004		
Time of Max Interval	2:50:00 PM	2:50:00 PM	2:50:00 PM	2:50:00 PM	2:50:00 PM	2:50:00 PM			3:50:00 PM	8:00:00 AM		
Average Interval SD	0.92	0.9	0.92	0.9	0.91	0.92	7.6	8.11	0.08	0		
Min Sample	0.4	0.4	0.4	0.4	0.4	0.4			-0.8	952.7		
Date of Min Sample	5/1/2004	5/1/2004	5/1/2004	5/1/2004	5/1/2004	5/1/2004			5/1/2004	5/31/2004		
Time of Min Sample	12:10:00 AM	12:00:00 AM	12:00:00 AM	12:00:00 AM	12:00:00 AM	12:00:00 AM			3:40:00 AM	8:30:00 AM		
Max Sample	24.4	24.4	24	24	23.7	24			33.4	989.1		
Date of Max Sample	5/11/2004	5/11/2004	5/11/2004	5/28/2004	5/28/2004	5/28/2004			5/5/2004	5/7/2004		
Time of Max Sample	3:10:00 PM	3:10:00 PM	2:50:00 PM	11:50:00 PM	11:50:00 PM	11:50:00 PM			3:50:00 PM	3:30:00 AM		
Average Interval TI	0.14	0.14	0.15	0.14	0.15	0.16						
Wind Speed Direction							NW	NW				

Site Information:

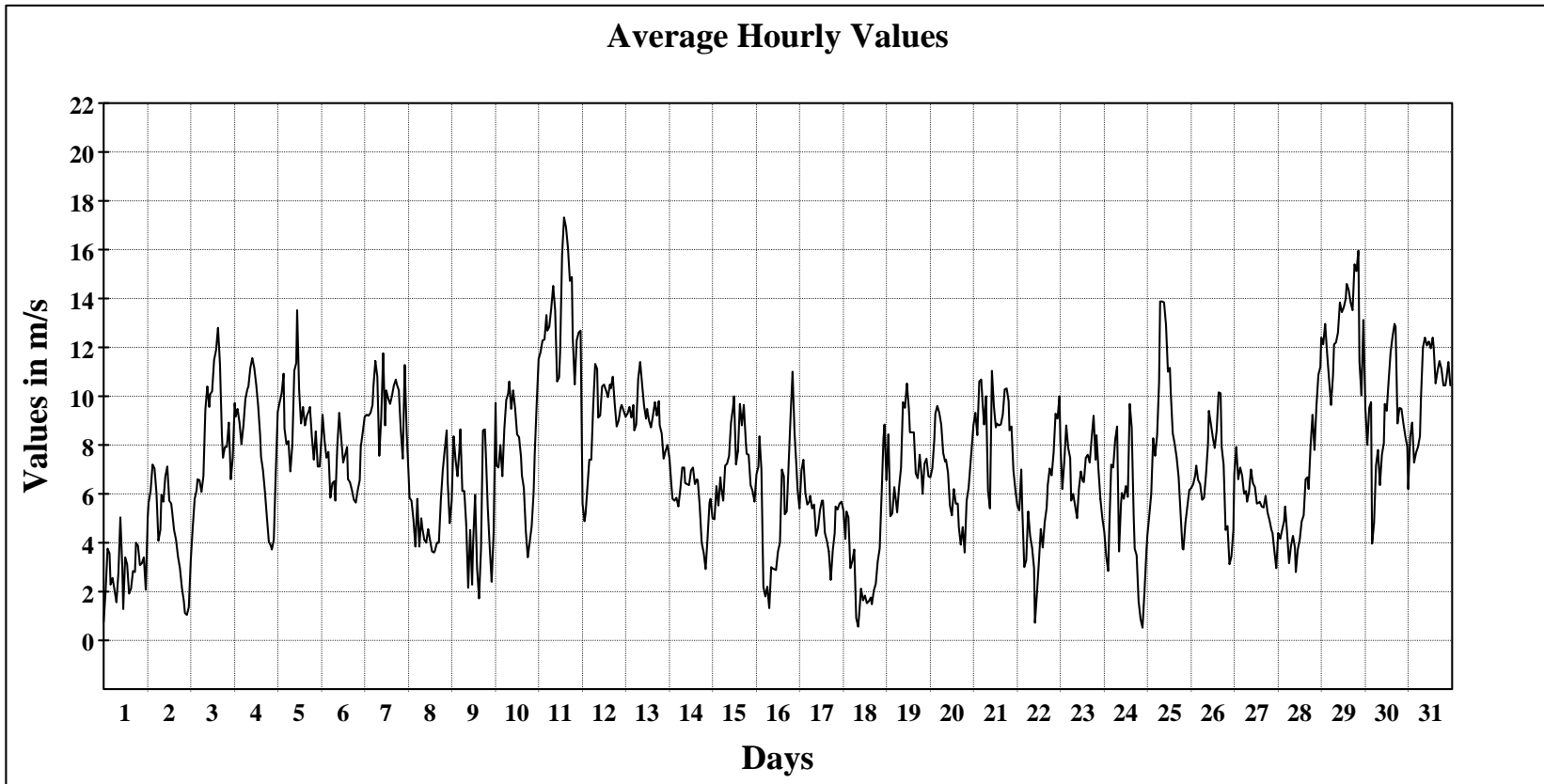
Project: Wind Hybrid Project
 Location: Morris, MN
 Elevation: 350 m

Sensor on channel 1:

NRG #40 Anem. m/s
 Height: 50 m
 Serial #: SN:

May 2004

Hourly Averages Graph, 50m, Ch 1
 SITE 1080
 WCROC



Average Value: 7.3

Site Information:

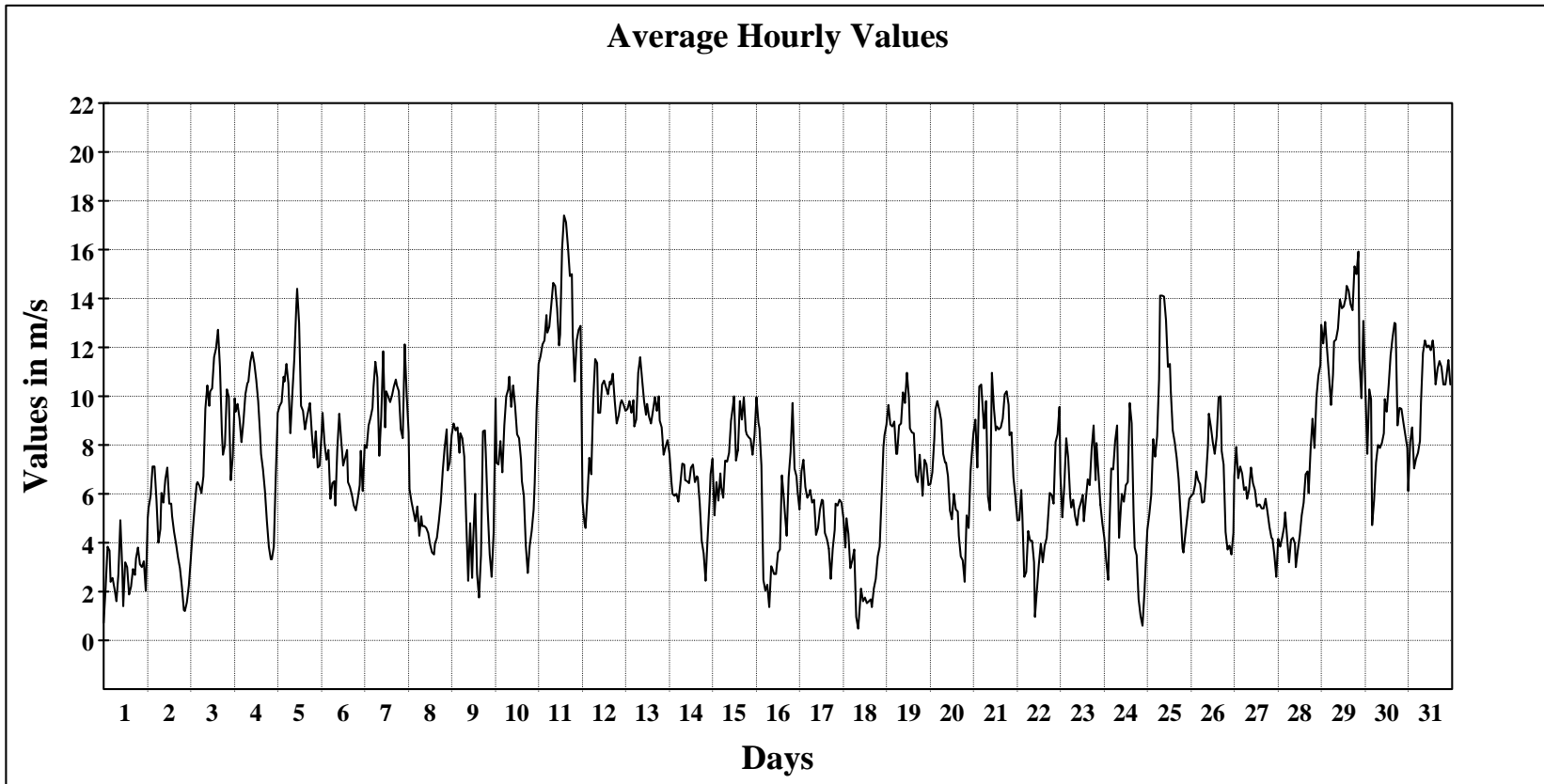
Project: Wind Hybrid Project
 Location: Morris, MN
 Elevation: 350 m

Sensor on channel 2:

NRG #40 Anem. m/s
 Height: 50 m
 Serial #: SN:

May 2004

Hourly Averages Graph, 50m, Ch 2
 SITE 1080
 WCROC



Average Value: 7.3

Site Information:

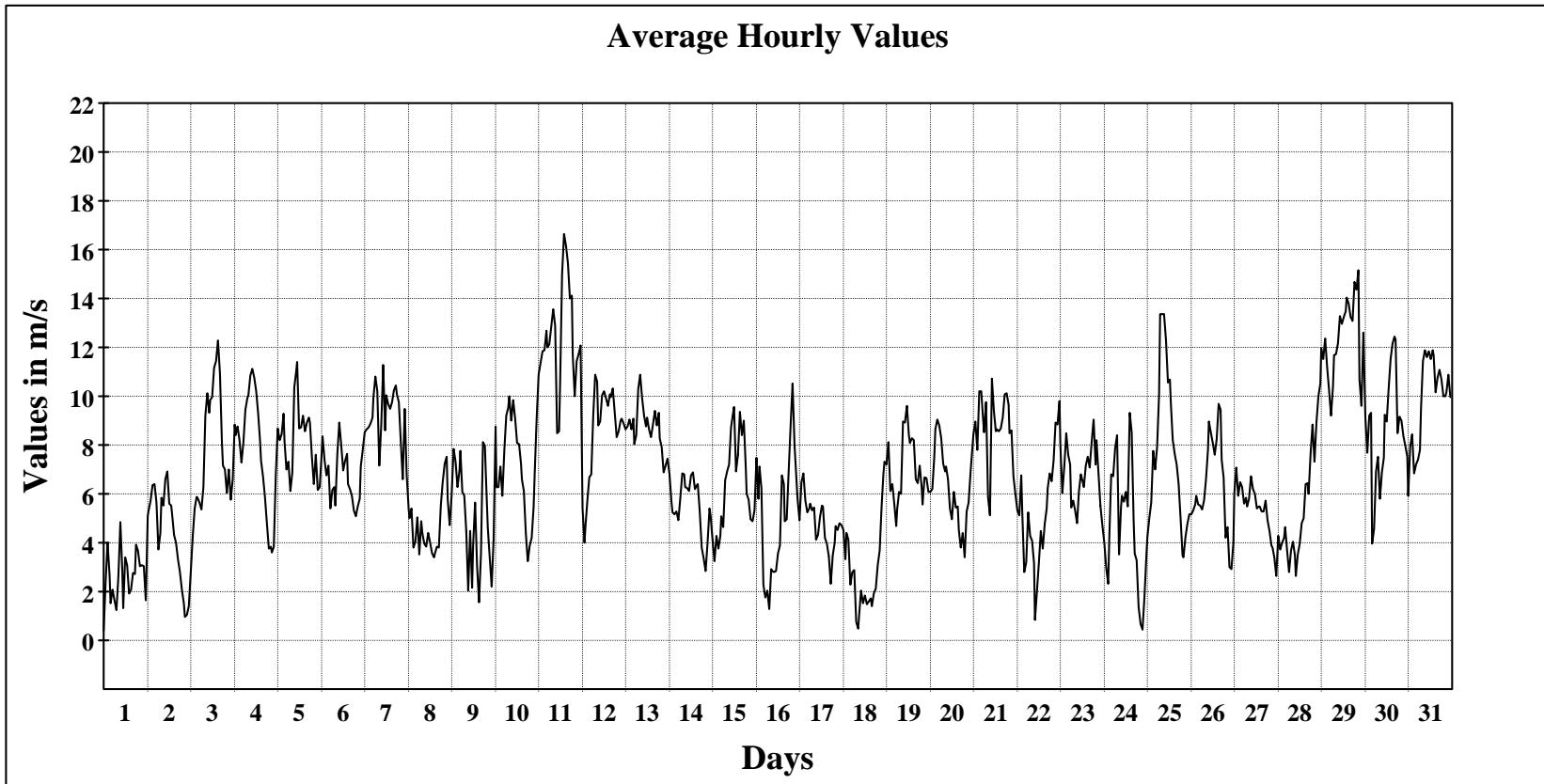
Project: Wind Hybrid Project
 Location: Morris, MN
 Elevation: 350 m

Sensor on channel 3:

NRG #40 Anem. m/s
 Height: 40 m
 Serial #: SN:

May 2004

Hourly Averages Graph, 40m, Ch 3
 SITE 1080
 WCROC



Average Value: 6.8

Site Information:

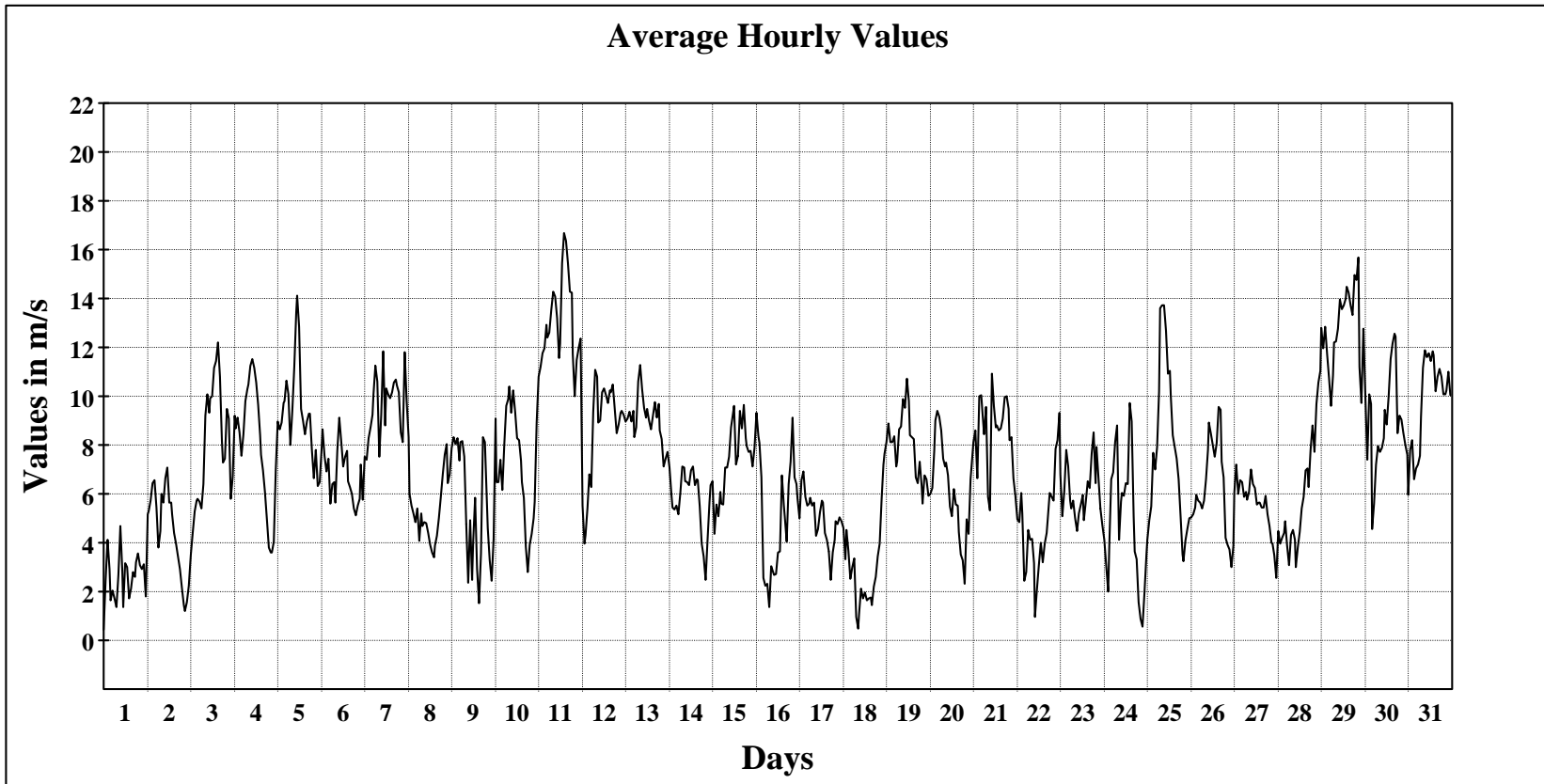
Project: Wind Hybrid Project
 Location: Morris, MN
 Elevation: 350 m

Sensor on channel 4:

NRG #40 Anem. m/s
 Height: 40 m
 Serial #: SN:

May 2004

Hourly Averages Graph, 40m, Ch 4
 SITE 1080
 WCROC



Average Value: 7.1

Site Information:

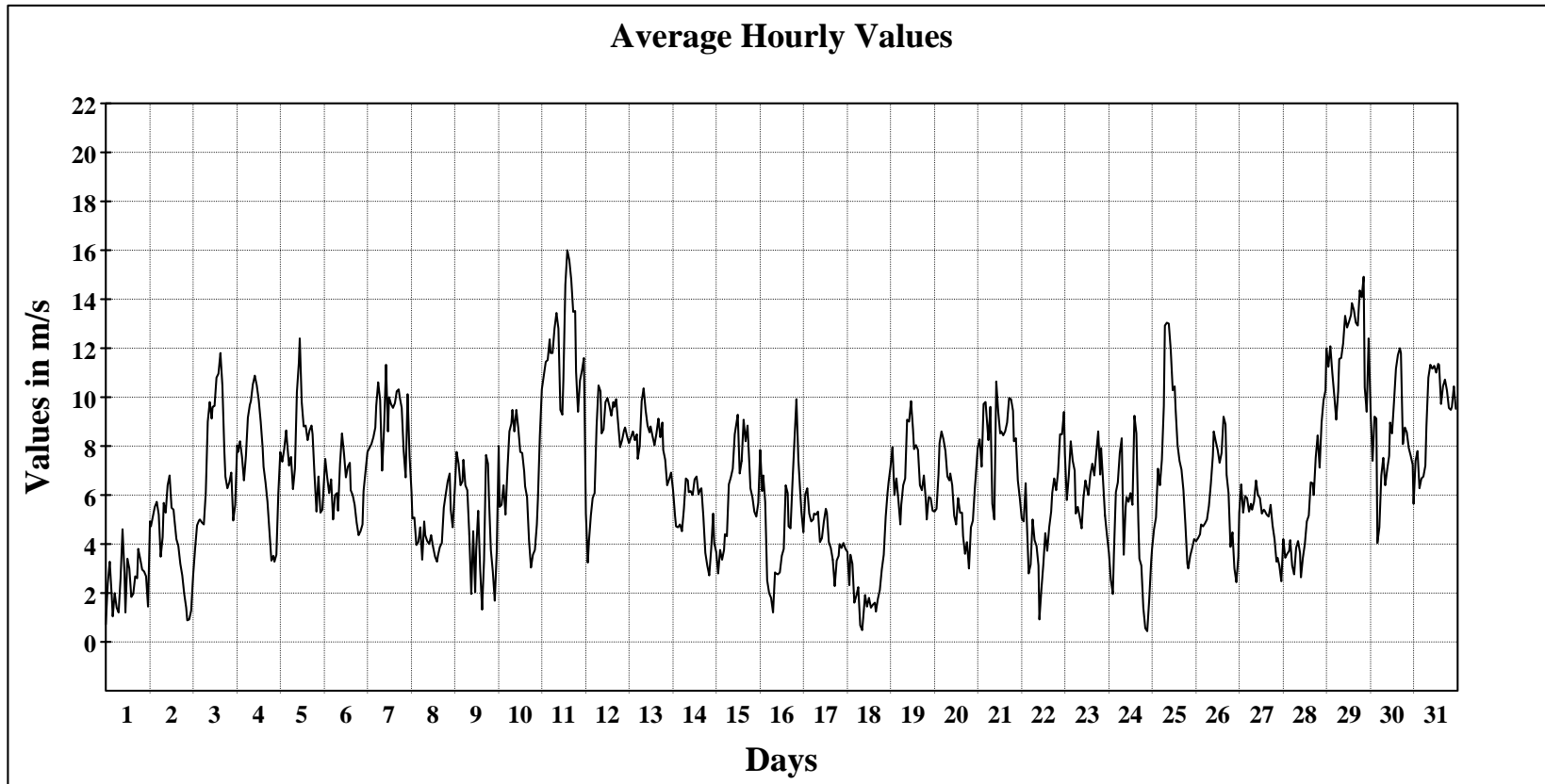
Project: Wind Hybrid Project
Location: Morris, MN
Elevation: 350 m

Sensor on channel 5:

NRG #40 Anem. m/s
Height: 30 m
Serial #: SN:

May 2004

Hourly Averages Graph, 30m, Ch 5
SITE 1080
WCROC



Average Value: 6.6

Site Information:

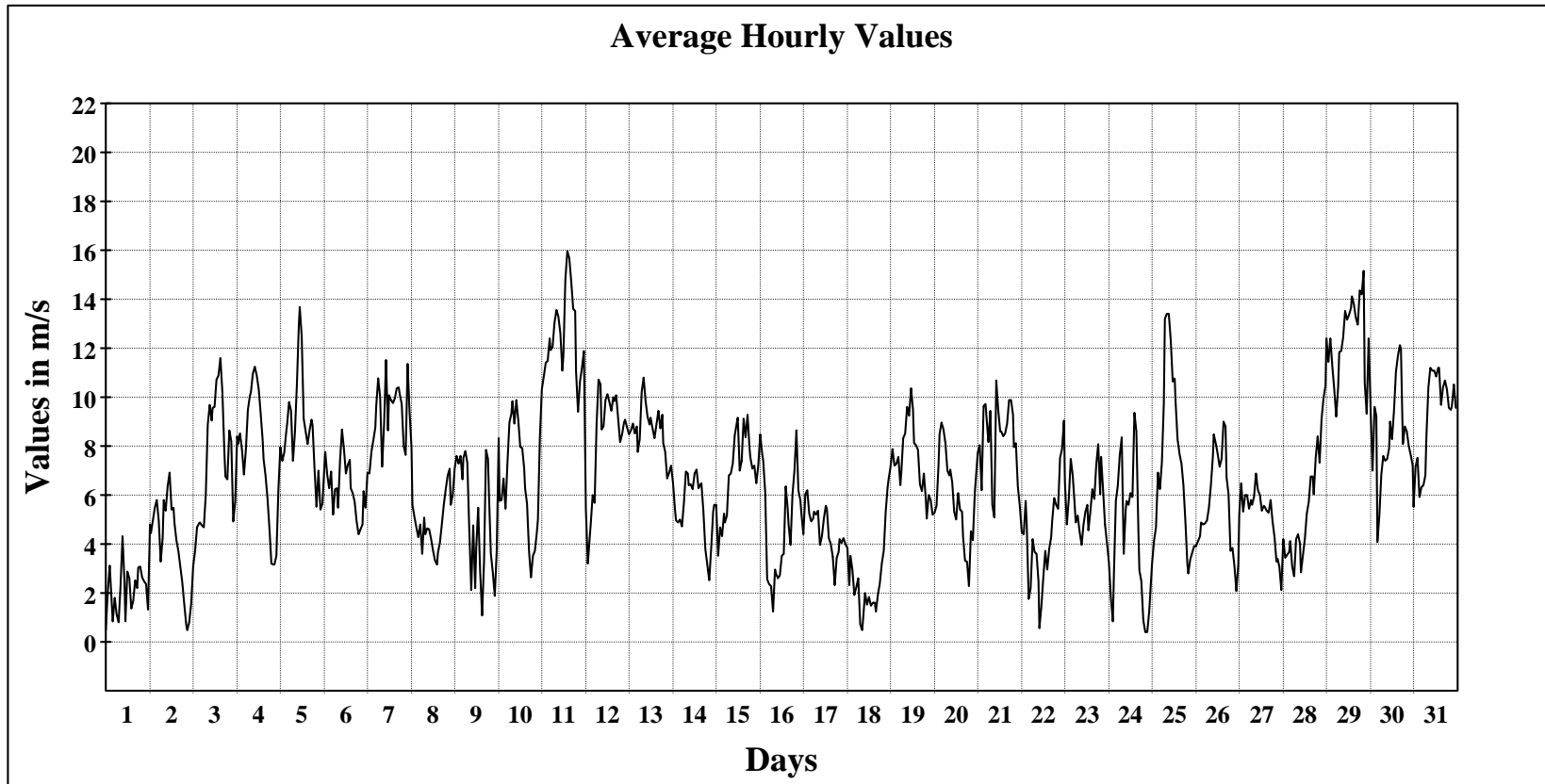
Project: Wind Hybrid Project
Location: Morris, MN
Elevation: 350 m

Sensor on channel 6:

NRG #40 Anem. m/s
Height: 30 m
Serial #: SN:

May 2004

Hourly Averages Graph, 30m, Ch 6
SITE 1080
WCROC



Average Value: 6.6

Site Information:

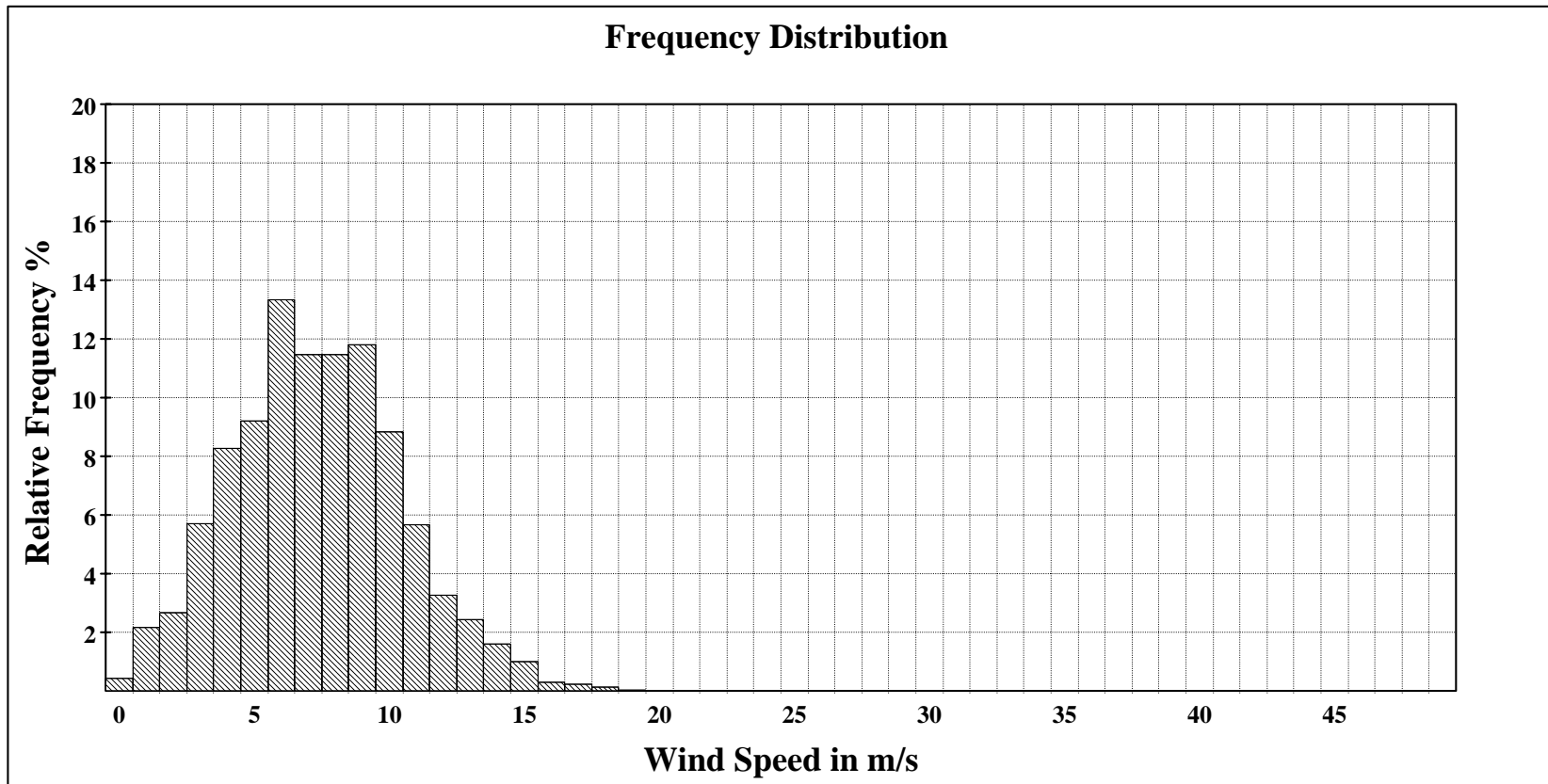
Project: Wind Hybrid Project
 Location: Morris, MN
 Elevation: 350 m

Sensor on channel 1:

NRG #40 Anem. m/s
 Height: 50 m
 Serial #: SN:

May 2004

Frequency Distribution, 50 m, Ch 1
 SITE 1080
 WCROC



Site Information:

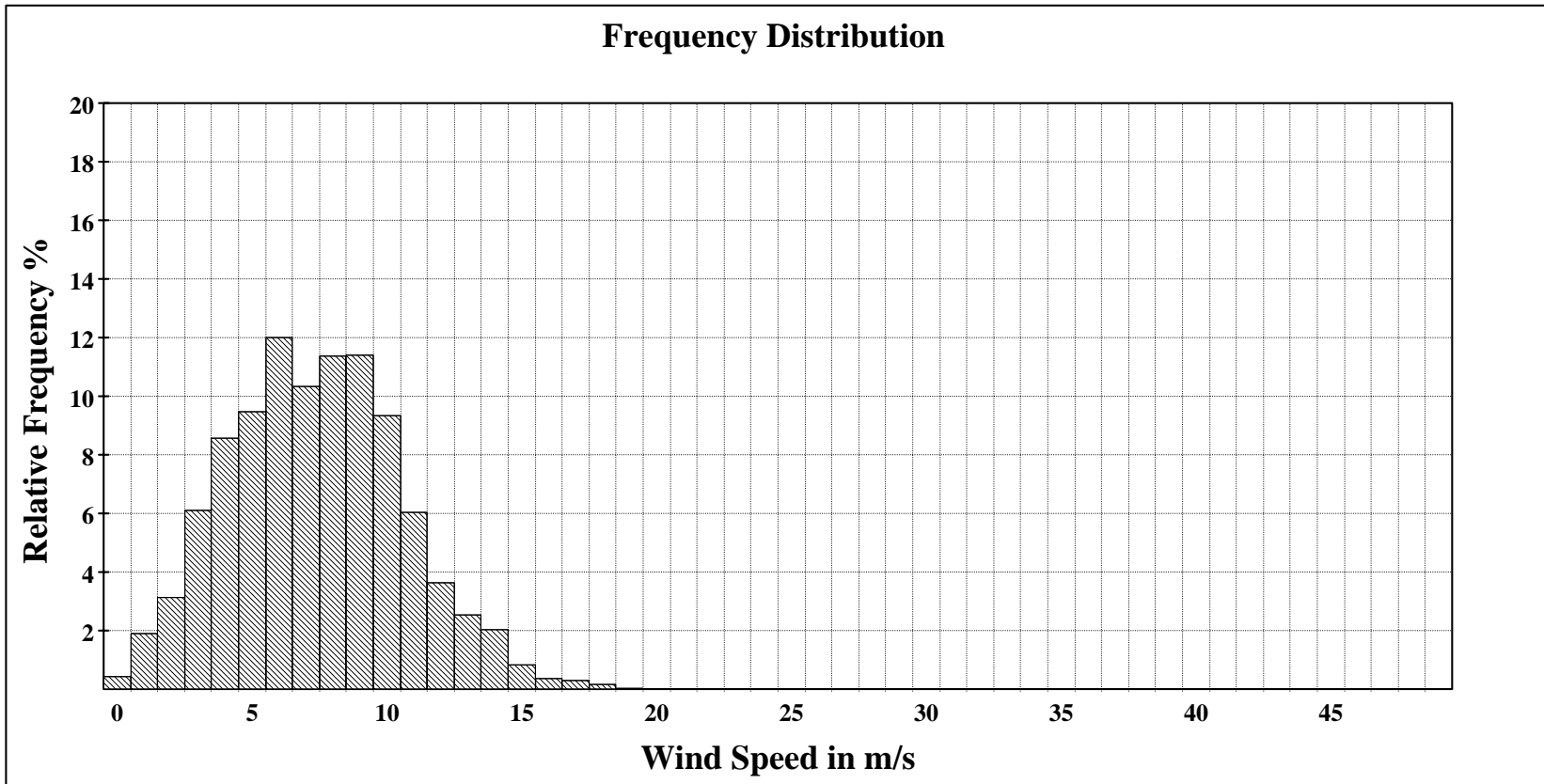
Project: Wind Hybrid Project
 Location: Morris, MN
 Elevation: 350 m

Sensor on channel 2:

NRG #40 Anem. m/s
 Height: 50 m
 Serial #: SN:

May 2004

Frequency Distribution, 50m, Ch 2
 SITE 1080
 WCROC



Site Information:

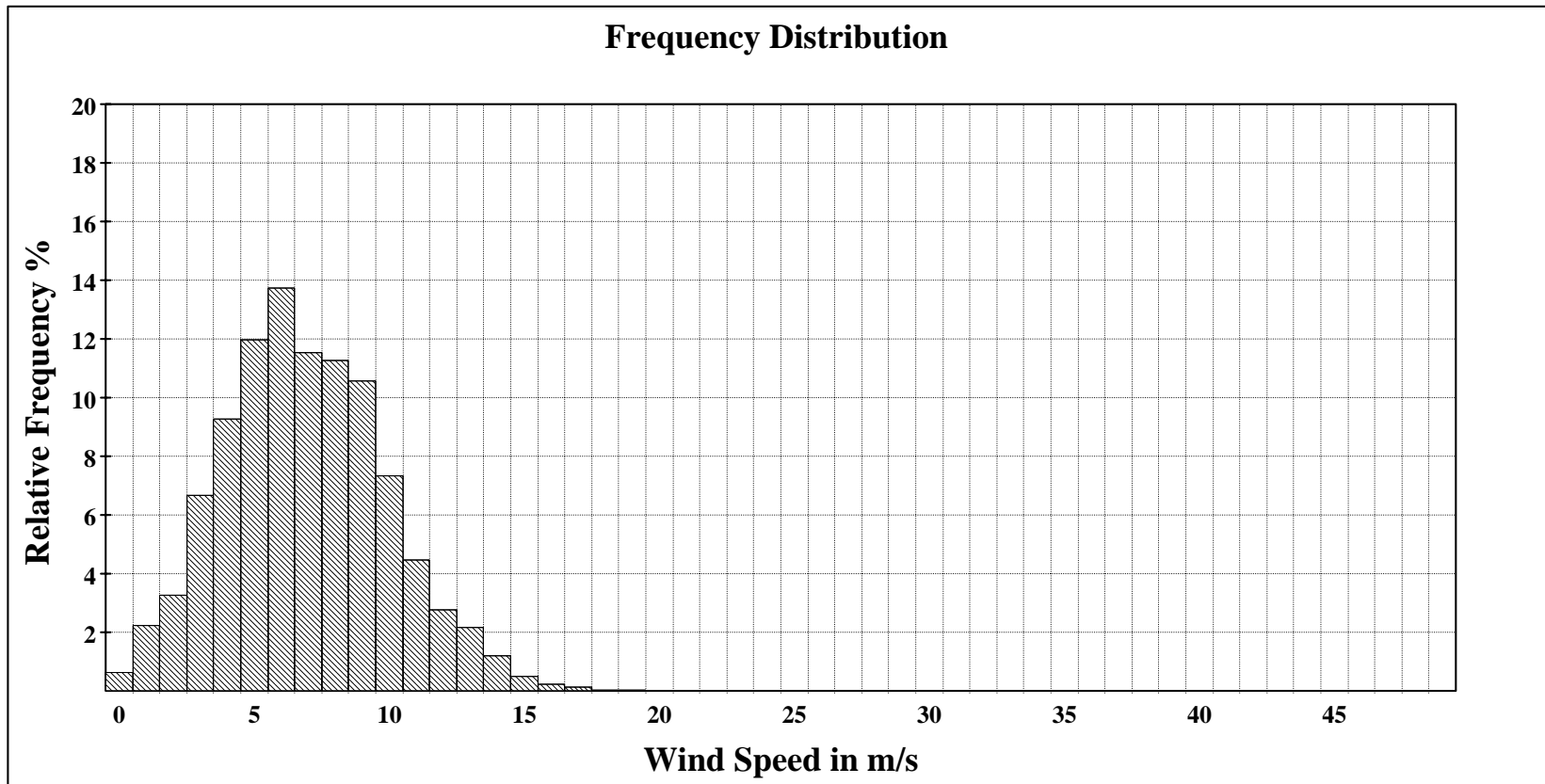
Project: Wind Hybrid Project
 Location: Morris, MN
 Elevation: 350 m

Sensor on channel 3:

NRG #40 Anem. m/s
 Height: 40 m
 Serial #: SN:

May 2004

Frequency Distribution, 40m, Ch 3
 SITE 1080
 WCROC



Site Information:

Project: Wind Hybrid Project
 Location: Morris, MN
 Elevation: 350 m

Sensor on channel 4:

NRG #40 Anem. m/s
 Height: 40 m
 Serial #: SN:

May 2004

Frequency Distribution, 40m, Ch 4
 SITE 1080
 WCROC

