

Site Information:

Project: Wind Hybrid Project
 Location: Morris, MN
 Elevation: 350 m

Sensor Information:

1 NRG #40 Anem. m/s
 2 NRG #40 Anem. m/s
 3 NRG #40 Anem. m/s
 4 NRG #40 Anem. m/s
 5 NRG #40 Anem. m/s
 6 NRG #40 Anem. m/s
 7 #200P Wind Vane
 8 #200P Wind Vane
 9 NRG #110S Temp C
 10 BP-20 Barom. mb
 11 No SCM Installed
 12 No SCM Installed

February 2004

Summary Report
 SITE 1080
 WCROC

Channel	1	2	3	4	5	6	7	8	9	10		
Height	50 m	50 m	40 m	40 m	30 m	30 m	50 m	40 m	2 m	2 m	-----	-----
Units	m/s	m/s	m/s	m/s	m/s	m/s	deg	deg	C	mb	-----	-----
Intervals with Valid Data	4176	4176	4176	4176	4176	4176	4176	4176	4176	4176		
Average Filtered Data	6.37	6.85	5.89	6.47	5.74	6.07	196.38	168.54	-6.67	981.53		
Average for All Data	6.37	6.85	5.89	6.47	5.74	6.07	196.38	168.54	-6.67	981.53		
Min Interval Average	0.4	0.4	0.4	0.4	0.4	0.4			-27.4	966.5		
Date of Min Interval	2/24/2004	2/24/2004	2/24/2004	2/24/2004	2/24/2004	2/24/2004			2/4/2004	2/20/2004		
Time of Min Interval	2:40:00 AM	2:40:00 AM	2:40:00 AM	2:40:00 AM	2:40:00 AM	2:40:00 AM			2:40:00 AM	3:40:00 AM		
Max Interval Average	14.4	15.5	13.7	15.2	13.4	14.6			6.6	992.8		
Date of Max Interval	2/20/2004	2/27/2004	2/20/2004	2/27/2004	2/20/2004	2/27/2004			2/18/2004	2/12/2004		
Time of Max Interval	3:50:00 PM	11:50:00 AM	3:50:00 PM	11:50:00 AM	3:30:00 PM	11:50:00 AM			2:40:00 PM	5:40:00 AM		
Average Interval SD	0.74	0.65	0.73	0.66	0.7	0.67	5.18	5.71	0.04	0.01		
Min Sample	0.4	0.4	0.4	0.4	0.4	0.4			-27.8	966.1		
Date of Min Sample	2/24/2004	2/24/2004	2/24/2004	2/24/2004	2/24/2004	2/24/2004			2/4/2004	2/20/2004		
Time of Min Sample	12:10:00 AM	12:10:00 AM	12:10:00 AM	12:10:00 AM	12:10:00 AM	12:10:00 AM			2:40:00 AM	6:00:00 AM		
Max Sample	17.9	19.1	17.6	18.3	17.2	18.7			6.7	993.8		
Date of Max Sample	2/25/2004	2/27/2004	2/20/2004	2/20/2004	2/20/2004	2/27/2004			2/22/2004	2/12/2004		
Time of Max Sample	9:20:00 PM	12:10:00 PM	3:40:00 PM	3:40:00 PM	3:40:00 PM	11:50:00 AM			1:40:00 PM	5:40:00 AM		
Average Interval TI	0.13	0.11	0.14	0.12	0.14	0.13						
Wind Speed Direction							NW	NW				

Site Information:

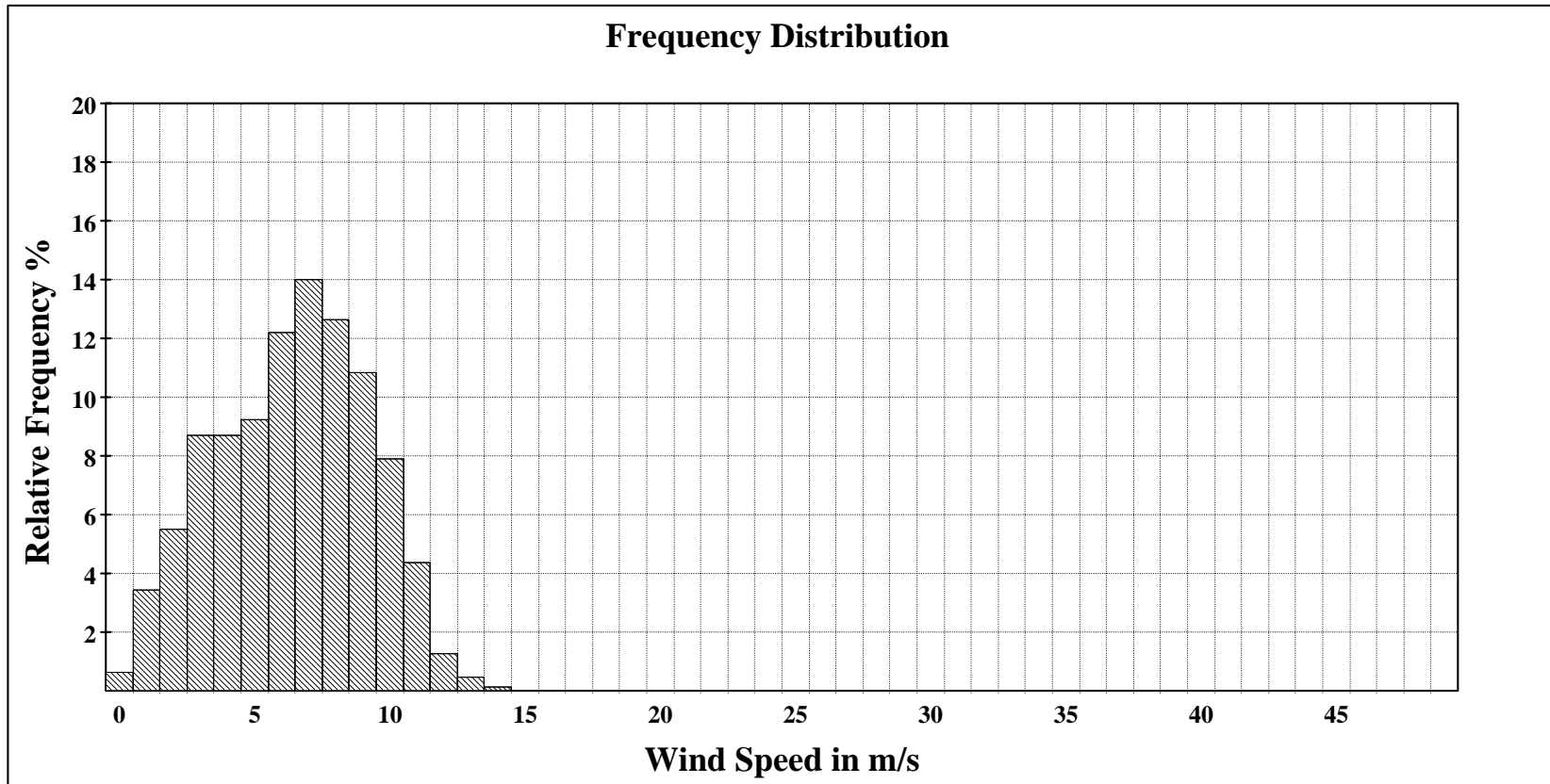
Project: Wind Hybrid Project
 Location: Morris, MN
 Elevation: 350 m

Sensor on channel 1:

NRG #40 Anem. m/s
 Height: 50 m
 Serial #: SN:

February 2004

Frequency Distribution, 50 m, Ch 1
 SITE 1080
 WCROC



Site Information:

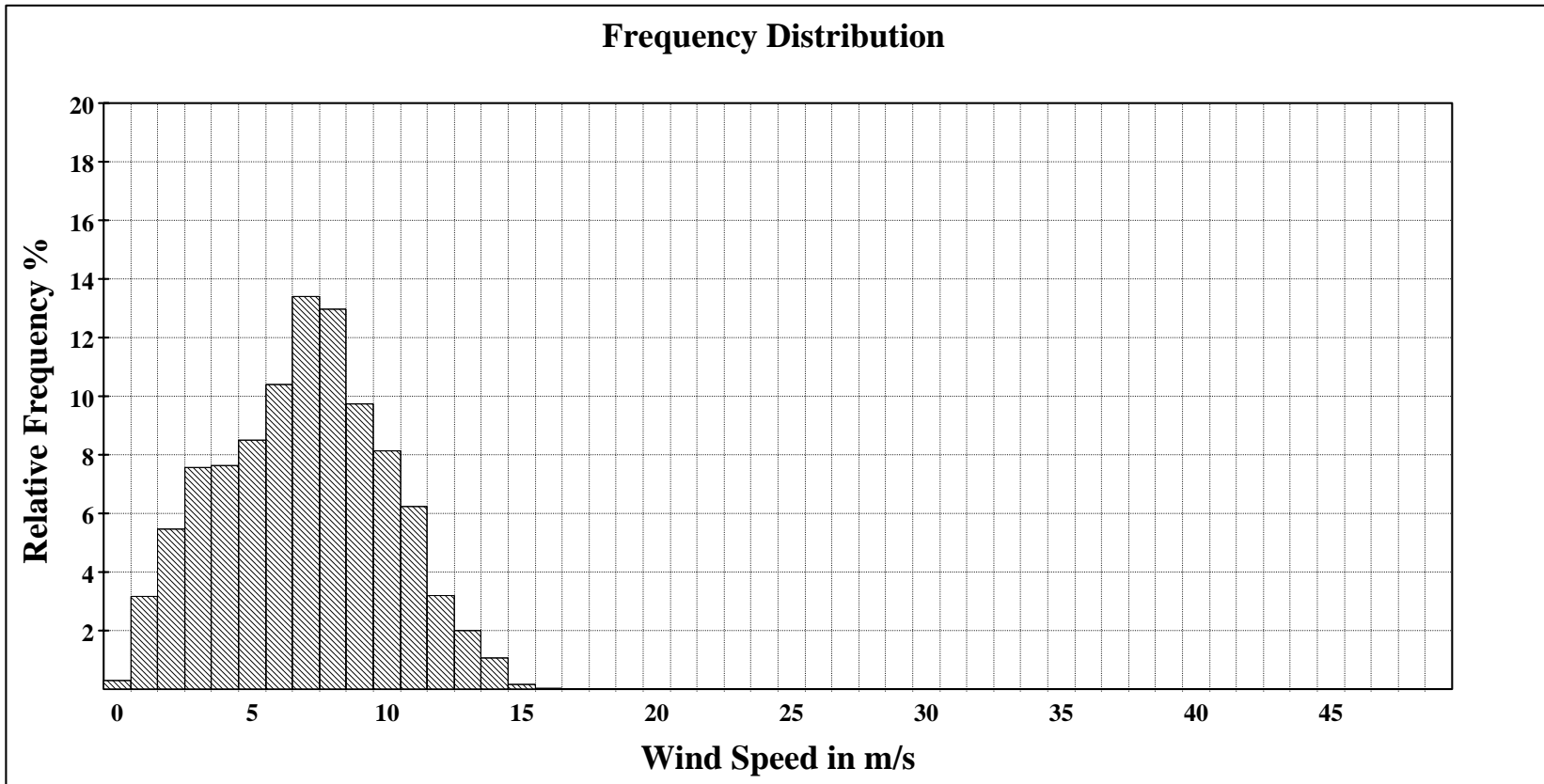
Project: Wind Hybrid Project
 Location: Morris, MN
 Elevation: 350 m

Sensor on channel 2:

NRG #40 Anem. m/s
 Height: 50 m
 Serial #: SN:

February 2004

Frequency Distribution, 50m, Ch 2
 SITE 1080
 WCROC



Site Information:

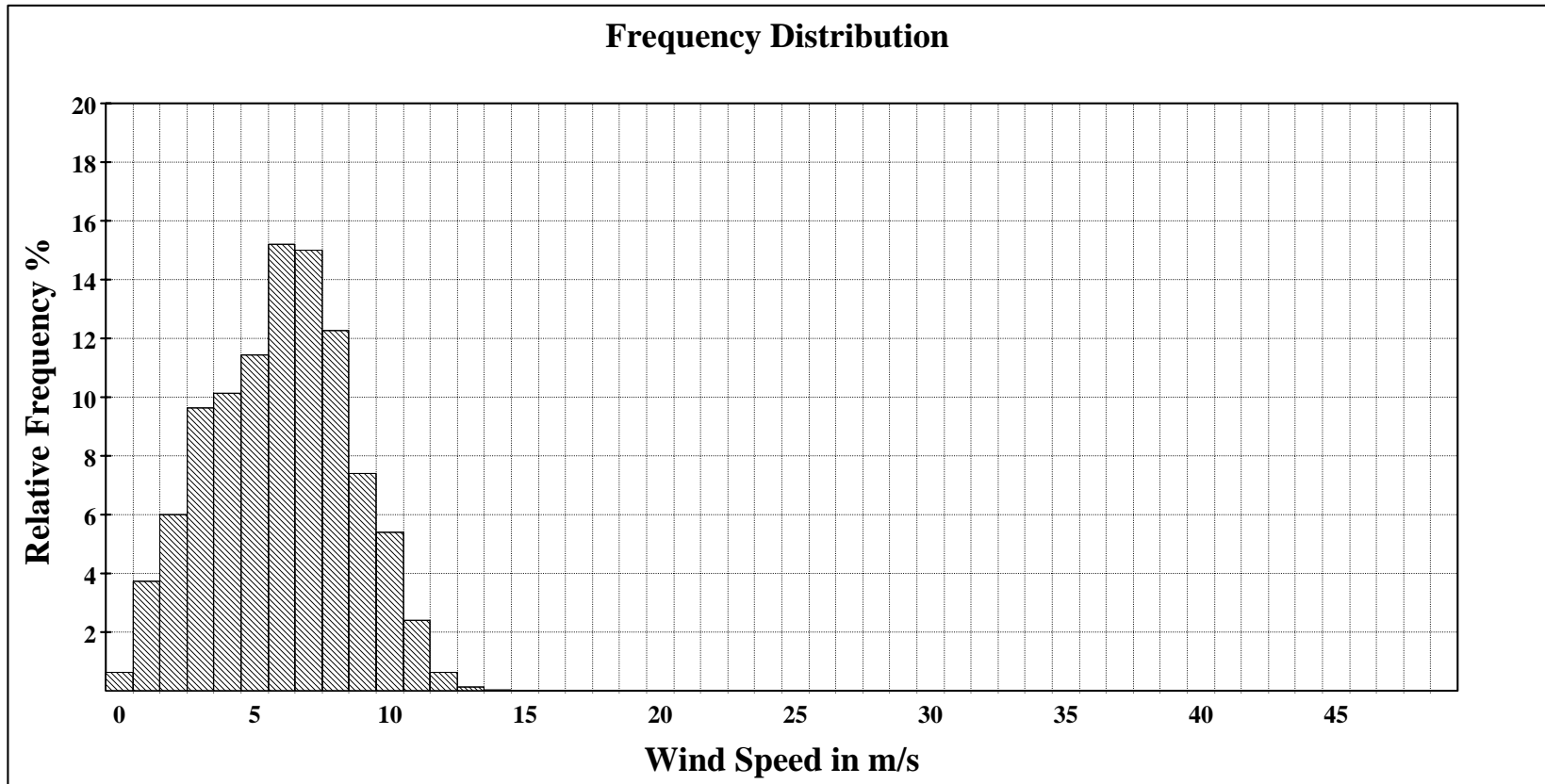
Project: Wind Hybrid Project
Location: Morris, MN
Elevation: 350 m

Sensor on channel 3:

NRG #40 Anem. m/s
Height: 40 m
Serial #: SN:

February 2004

Frequency Distribution, 40m, Ch 3
SITE 1080
WCROC



Site Information:

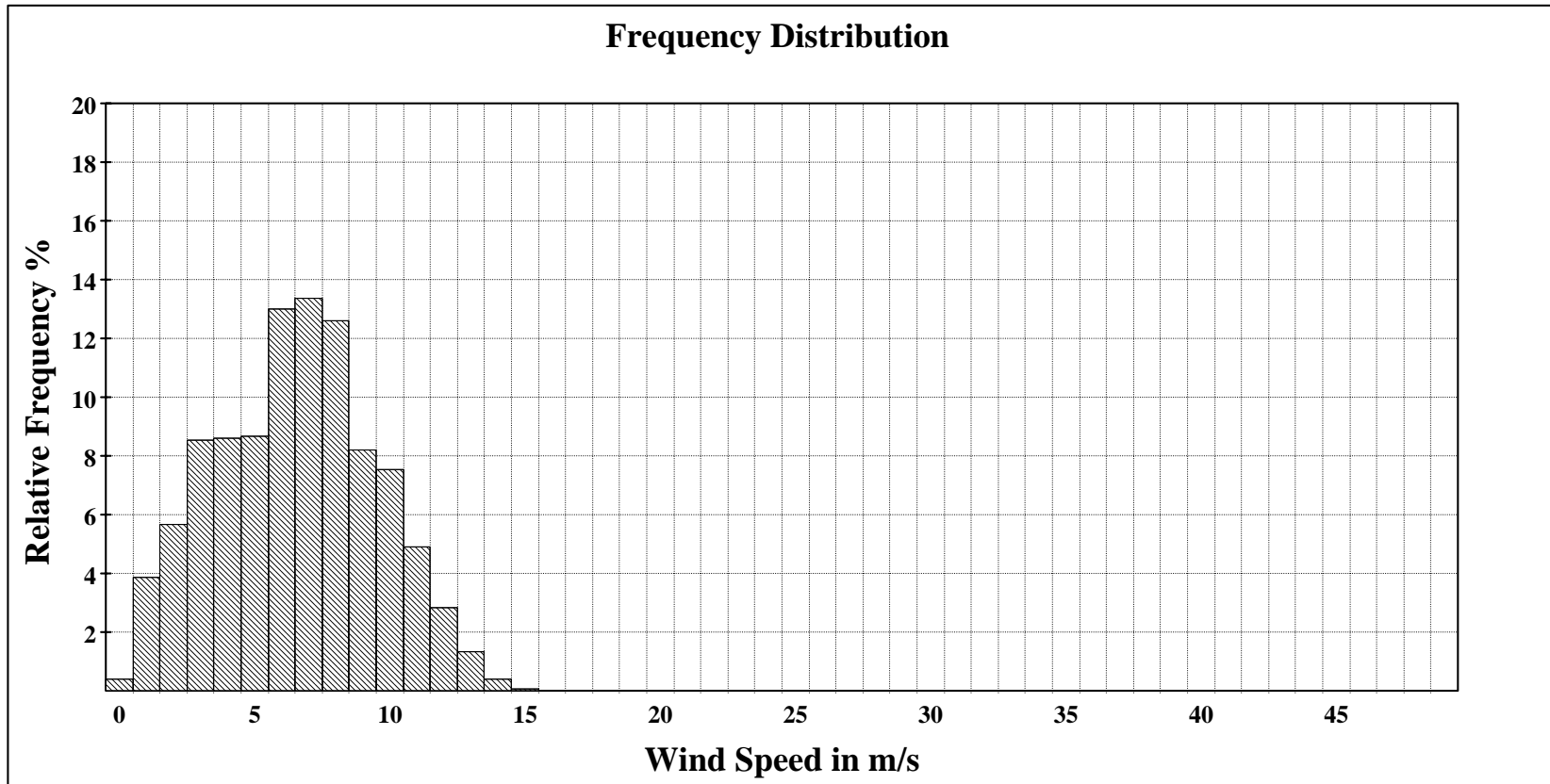
Project: Wind Hybrid Project
 Location: Morris, MN
 Elevation: 350 m

Sensor on channel 4:

NRG #40 Anem. m/s
 Height: 40 m
 Serial #: SN:

February 2004

Frequency Distribution, 40m, Ch 4
 SITE 1080
 WCROC



Site Information:

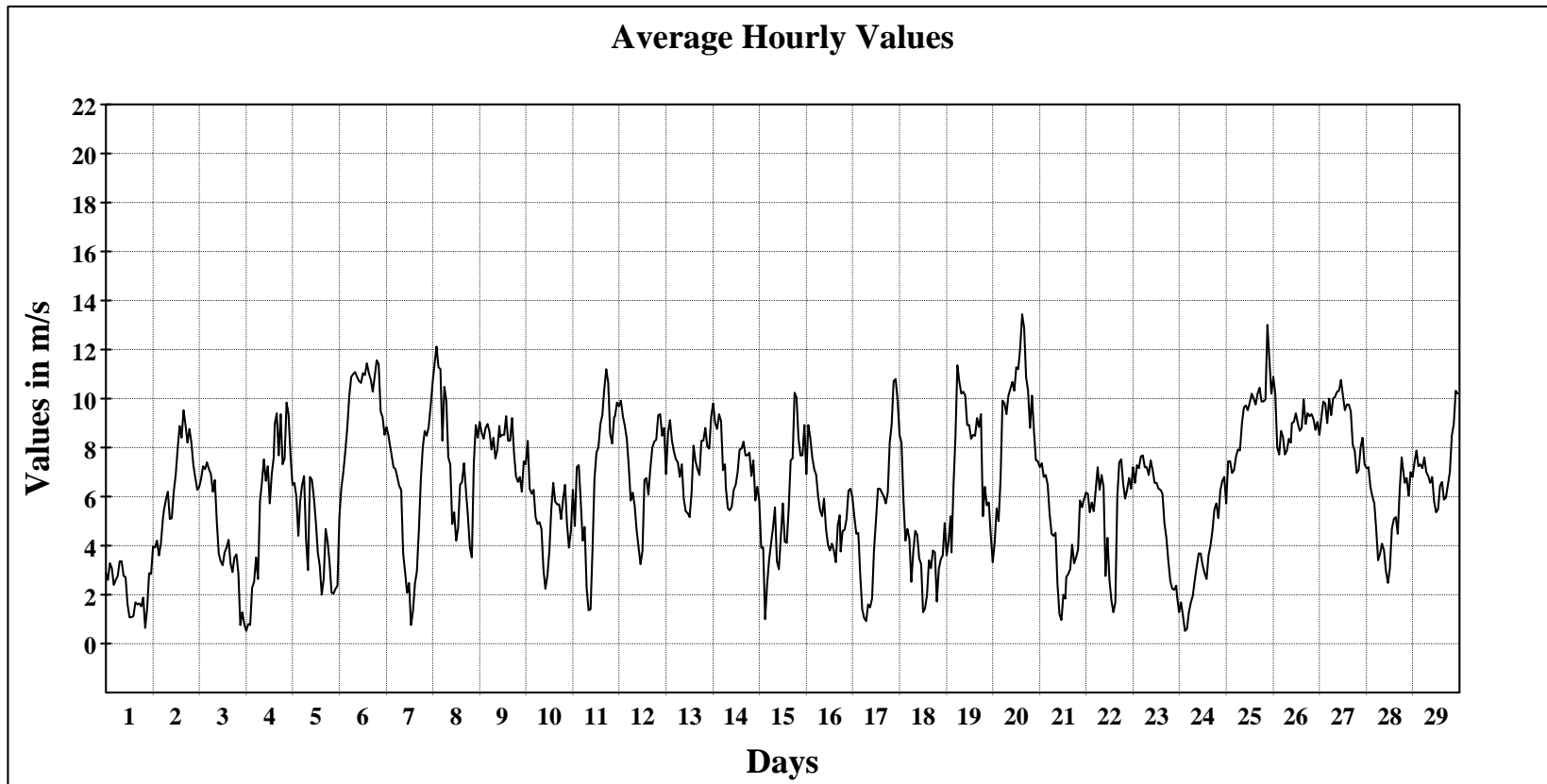
Project: Wind Hybrid Project
Location: Morris, MN
Elevation: 350 m

Sensor on channel 1:

NRG #40 Anem. m/s
Height: 50 m
Serial #: SN:

February 2004

Hourly Averages Graph, 50m, Ch 1
SITE 1080
WCROC



Average Value: 6.4

Site Information:

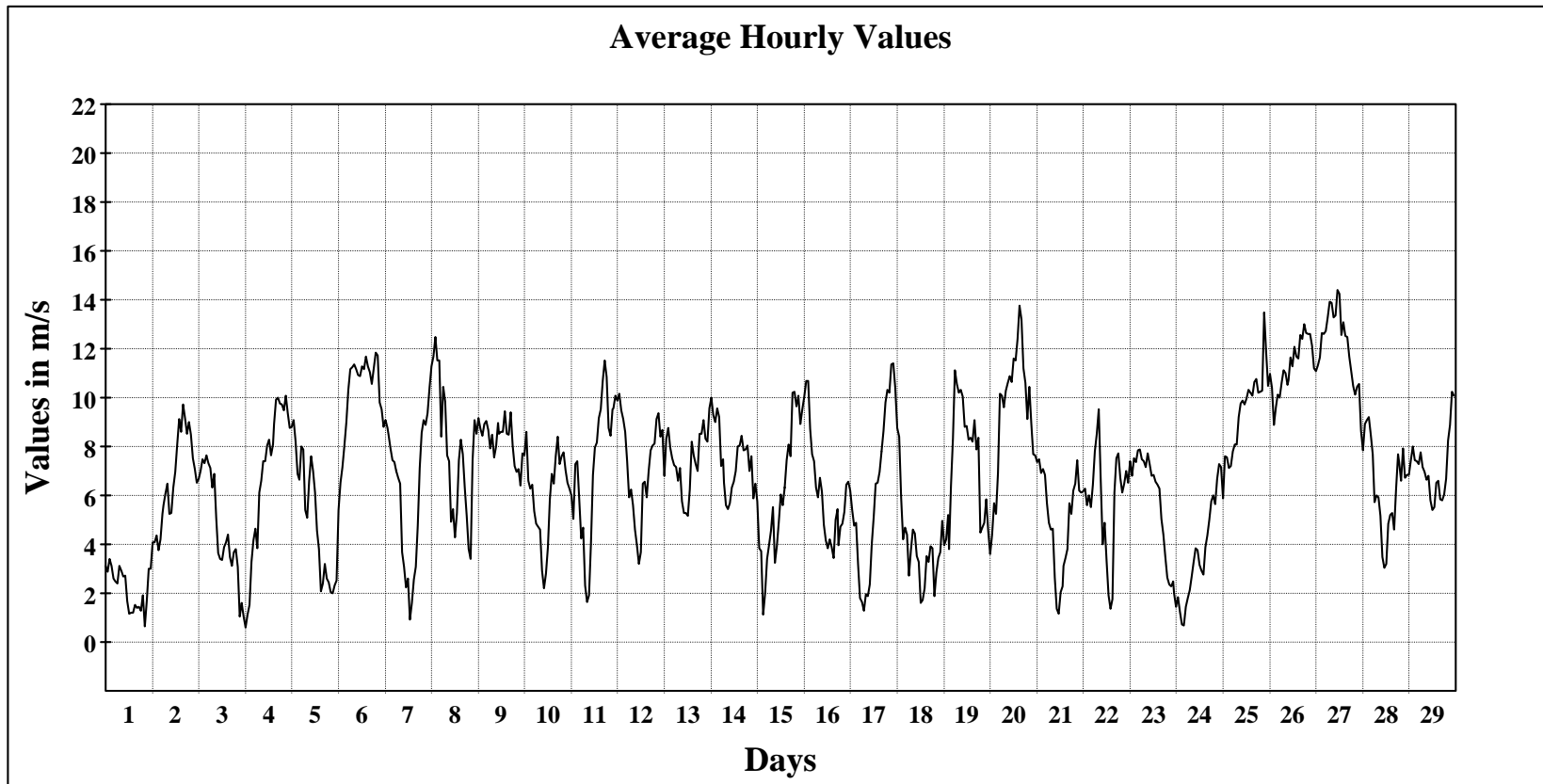
Project: Wind Hybrid Project
Location: Morris, MN
Elevation: 350 m

Sensor on channel 2:

NRG #40 Anem. m/s
Height: 50 m
Serial #: SN:

February 2004

Hourly Averages Graph, 50m, Ch 2
SITE 1080
WCROC



Average Value: 6.9

Site Information:

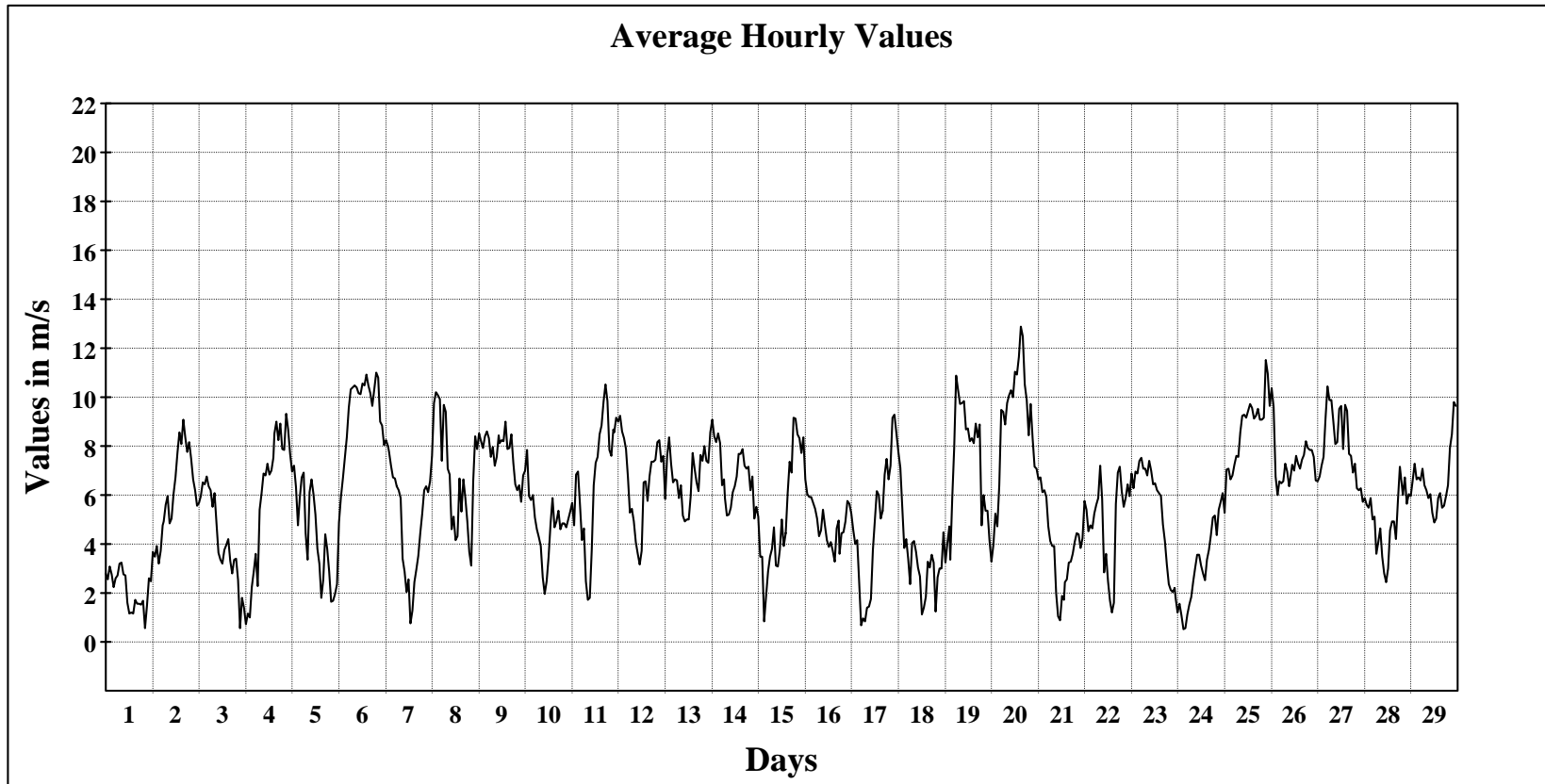
Project: Wind Hybrid Project
Location: Morris, MN
Elevation: 350 m

Sensor on channel 3:

NRG #40 Anem. m/s
Height: 40 m
Serial #: SN:

February 2004

Hourly Averages Graph, 40m, Ch 3
SITE 1080
WCROC



Average Value: 5.9

Site Information:

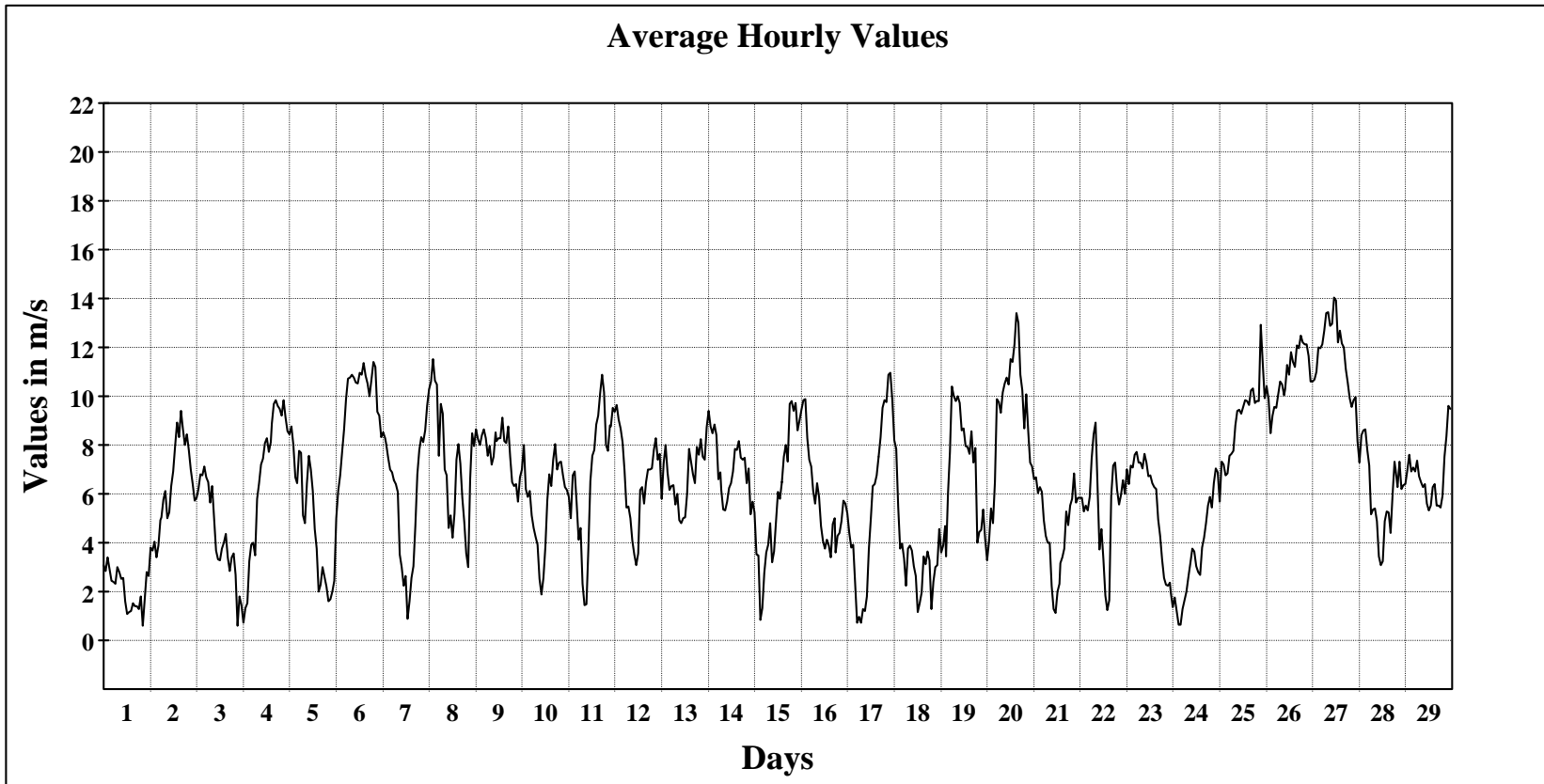
Project: Wind Hybrid Project
 Location: Morris, MN
 Elevation: 350 m

Sensor on channel 4:

NRG #40 Anem. m/s
 Height: 40 m
 Serial #: SN:

February 2004

Hourly Averages Graph, 40m, Ch 4
 SITE 1080
 WCROC



Average Value: 6.5

Site Information:

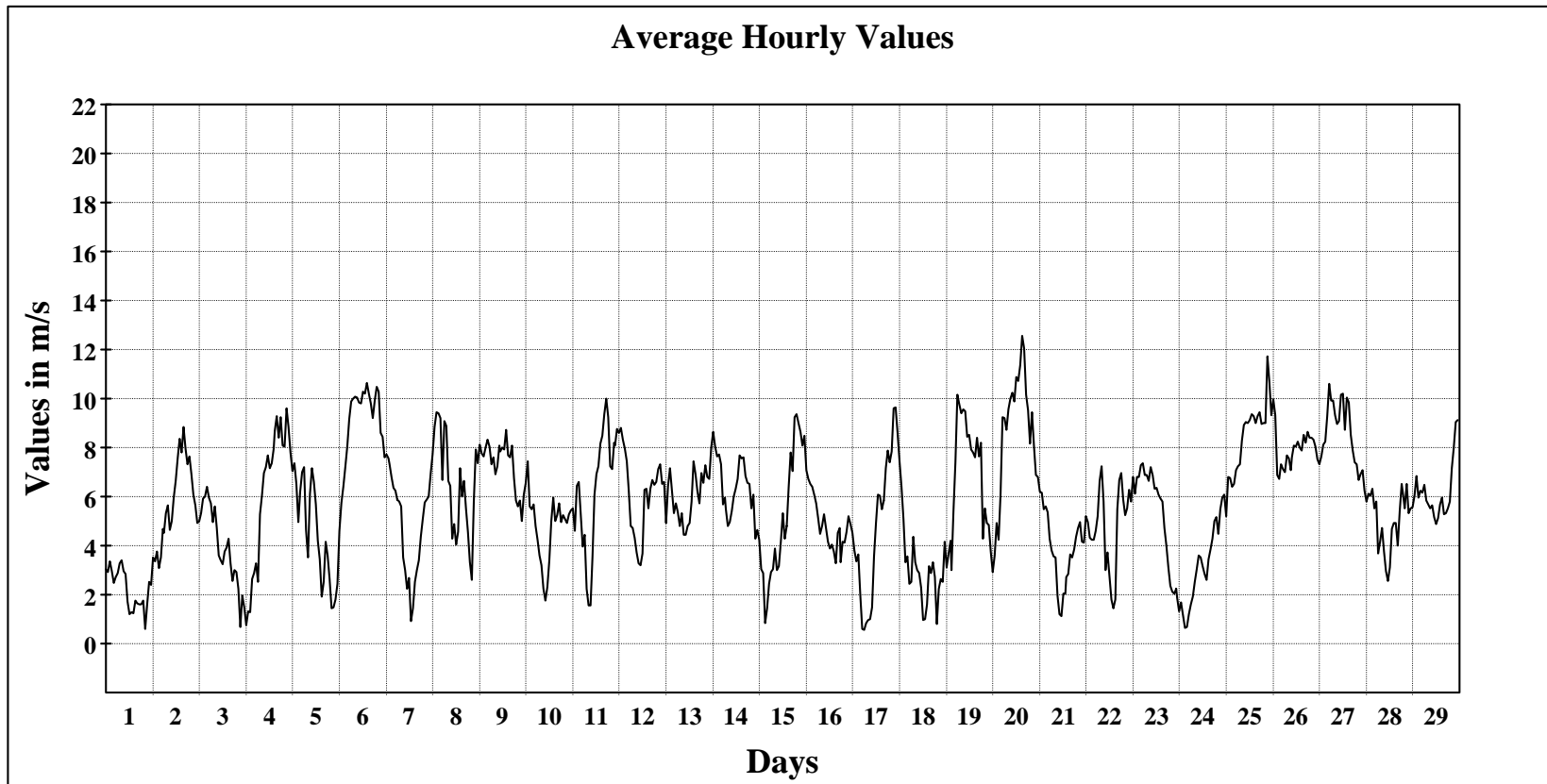
Project: Wind Hybrid Project
Location: Morris, MN
Elevation: 350 m

Sensor on channel 5:

NRG #40 Anem. m/s
Height: 30 m
Serial #: SN:

February 2004

Hourly Averages Graph, 30m, Ch 5
SITE 1080
WCROC



Average Value: 5.7

Site Information:

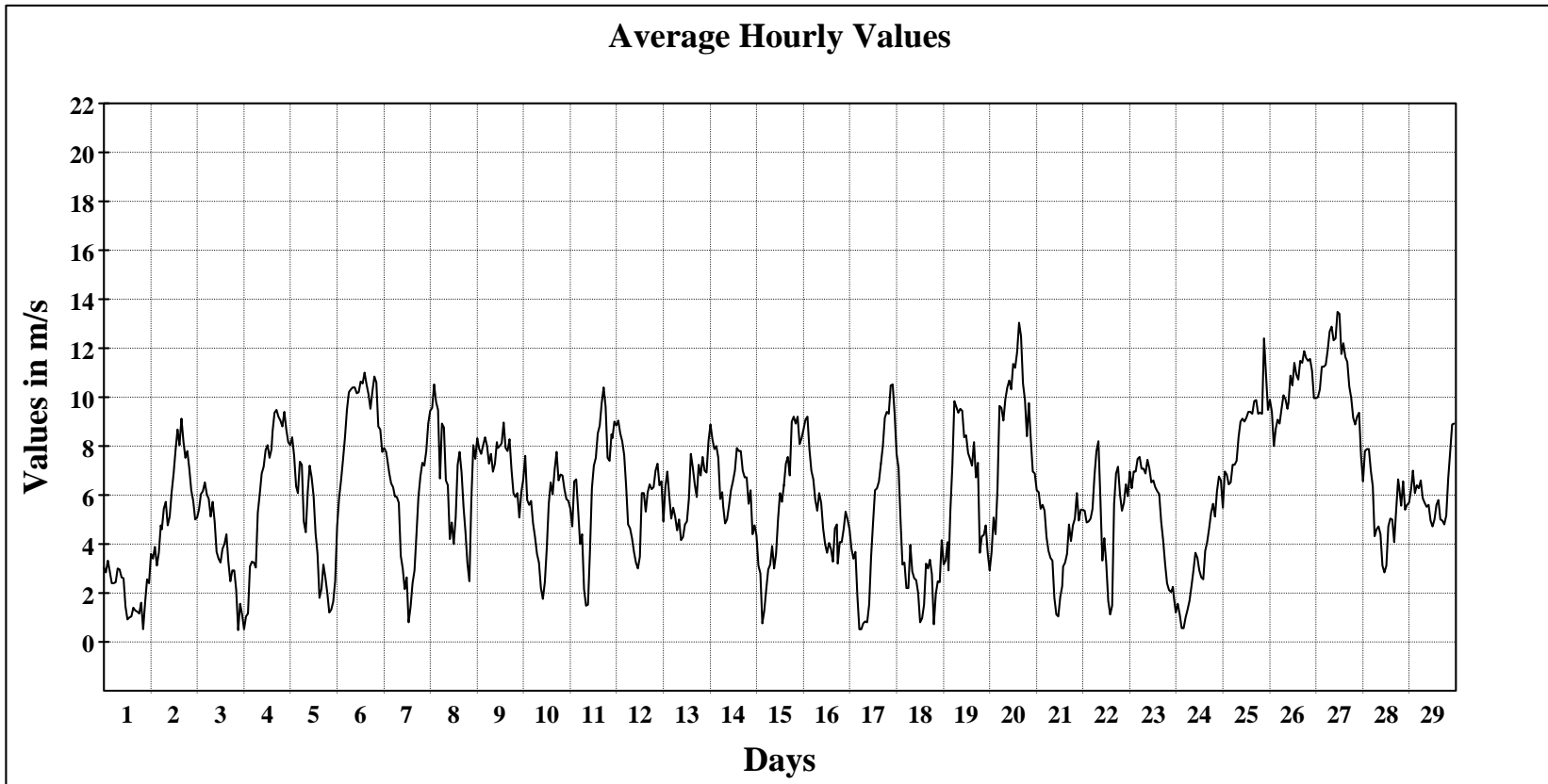
Project: Wind Hybrid Project
 Location: Morris, MN
 Elevation: 350 m

Sensor on channel 6:

NRG #40 Anem. m/s
 Height: 30 m
 Serial #: SN:

February 2004

Hourly Averages Graph, 30m, Ch 6
 SITE 1080
 WCROC



Average Value: 6.1

